

MAINTENANCE INSTRUCTION STRAINER CLEANING

This information is to help you properly remove and reinstall the strainer on your A\C unit for cleaning. This procedure should be done at least twice per year to maintain good performance and operation of your A\C unit.

This is a list of tools you will need:

A small pipe wrench, 8" will do

A 3/4 wrench (open and box end)

Channel lock pliers

3/4 socket and ratchet

Teflon tape

A small can (soup size)

Steps to follow:

1. Turn off unit at the thermostat then close both ball valves to the unit, these valves have a red handle on them

See figure 1

2. Locate the water supply side, this will have water inlet sticker on the unit.

This is the side the strainer is on. See figure 2

3. Locate the drain fitting on the end of strainer and make sure the small red valve is in the off position, then remove the cap (you may need the channel locks for this) and place the can under the drain. Open the small red valve slowly to release the pressure on the pipe **Note:** you should only remove a small amount of water at this point. See figure 3

4. When pressure and water stop, place the pipe wrench on the main part of the strainer and the 3/4 wrench on the bolt end of the strainer (see figure 4)

Continued from page 1

4. Turn the wrench counter clockwise and hold the pipe wrench so the strainer will not move. If you are unable to remove the strainer this way then use your channel locks and pipe wrench and remove the drain end of the valve (see figure 5). After removing drain use the 3/4 socket and ratchet in place of the 3/4 wrench And remove the end of the strainer (see figure 6)
5. After removal of the strainer inspect the screen and clean all debris from it.
6. Reinstall screen back in to the strainer, if the drain has been removed use the Teflon tape around the threads (figure 7)
7. Once all fittings are back on, open the supply line valve first and slowly. Once open, check for leaks. If no leaks are found open the return line valve. Once both valves are open, you may turn on the unit.

TOOL LIST



FIGURE 1A



FIGURE 1B



FIGURE 2



FIGURE 3A



FIGURE 3B



FIGURE 4

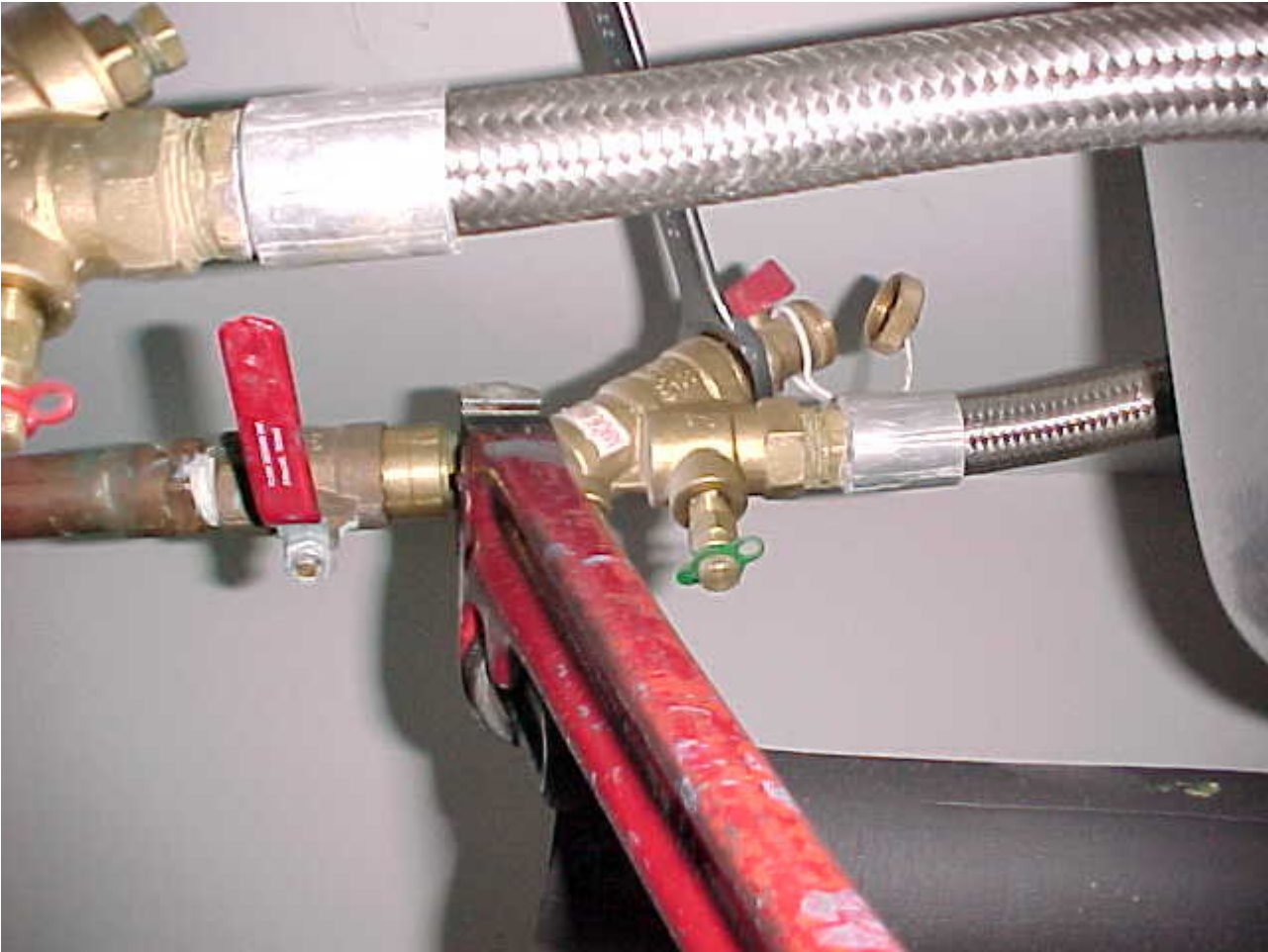


FIGURE 5

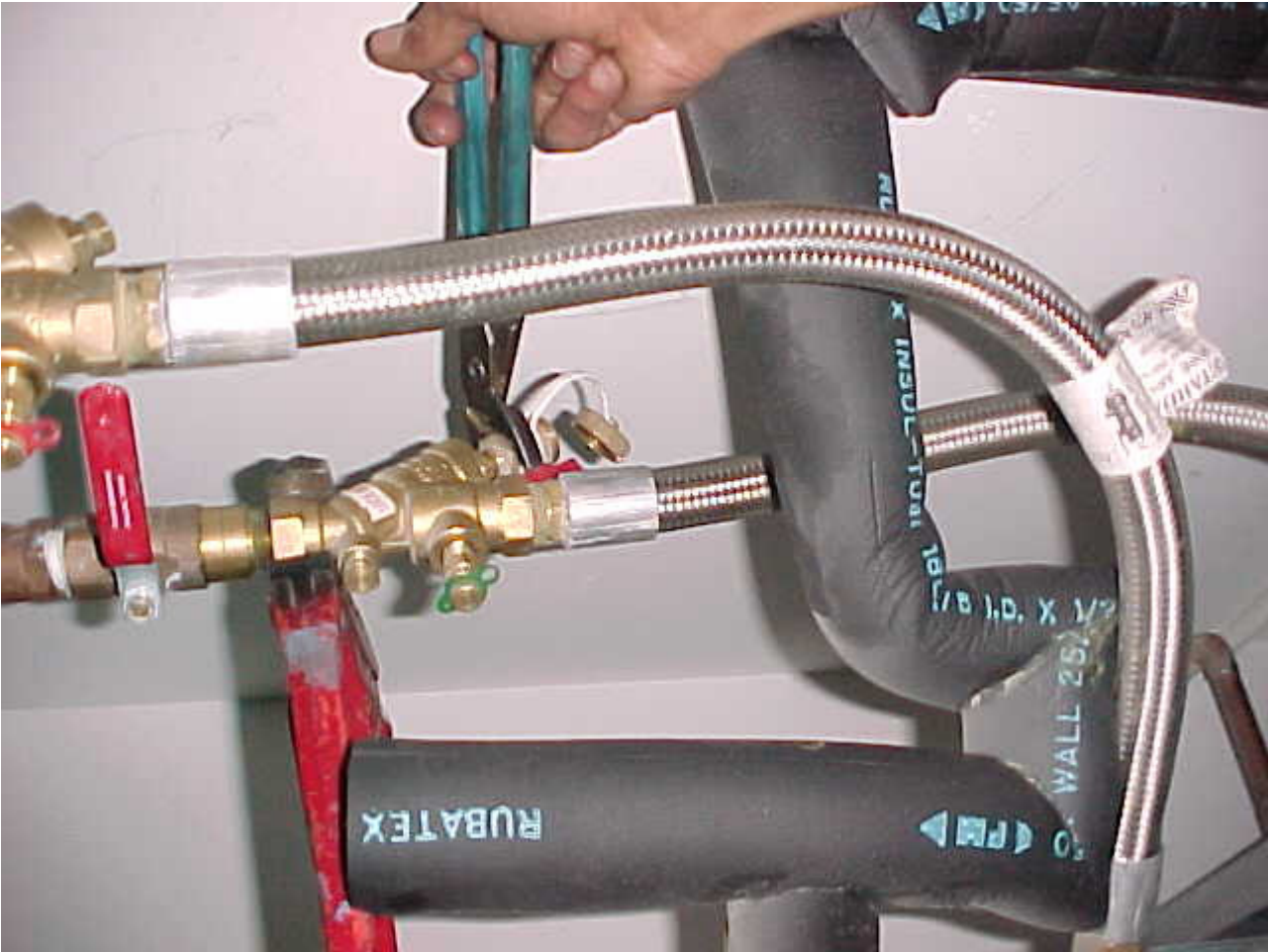


FIGURE 6A

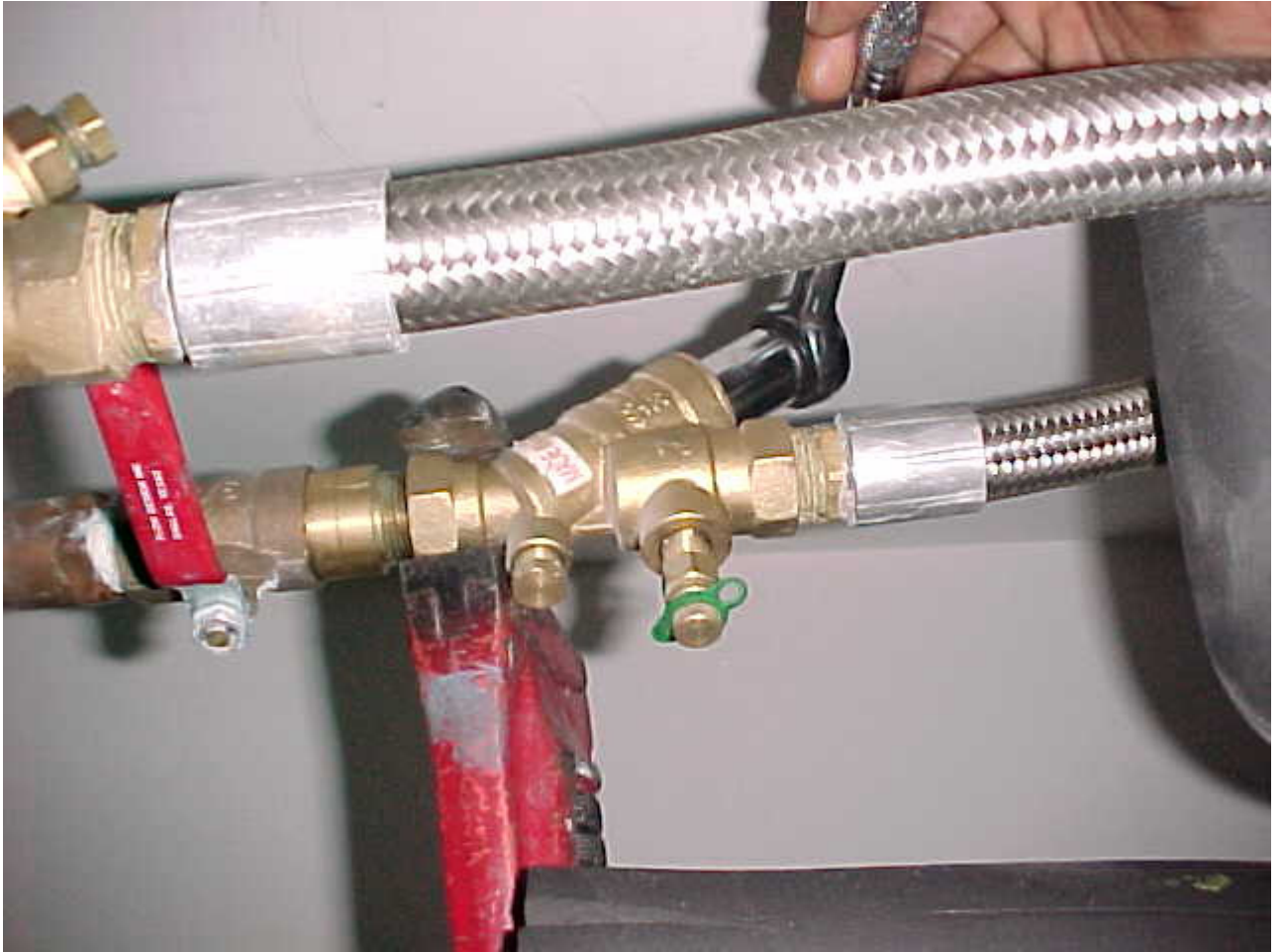


FIGURE 6B



FIGURE 7

